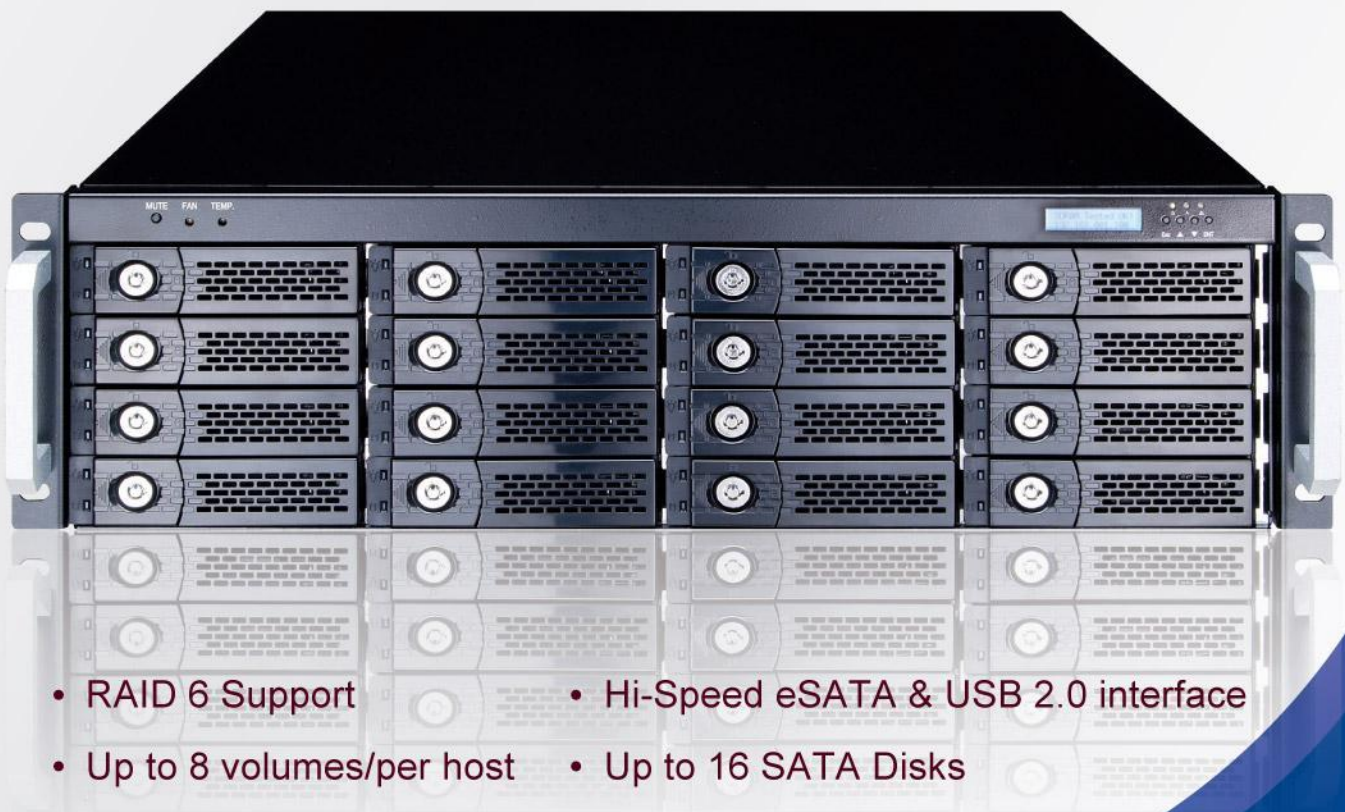


NR335A

Cost-Effective Raid Subsystem



- RAID 6 Support
- Hi-Speed eSATA & USB 2.0 interface
- Up to 8 volumes/per host
- Up to 16 SATA Disks

• Highlights

Netstor's NR335A Raid Subsystem features eSATA(3.0Gbps) and USB 2.0 interfaces for ease of connection with PC, MAC or Server workstation. The built-in hardware controller unleashes the power of 3.0Gbps performance and NCQ support on the eSATA host port. The eSATA port of NR335A delivers in excess of 210MB/s sustained RAID 5 reads and over 176MB/s RAID 5 sequential writes. With its highest Raid 6 technology for allowing two HDDs failed drive tolerance and most easy RAID management through LCD, Web-based GUI make this Raid subsystem meet the requirement of DVR markets on data reliability, usage flexibility and cost-effective.



RoHS Compliant



Host Interface

- 2 x eSATA(SATA II 3.0Gbps)
- 1 x Hi-Speed USB 2.0

Controller

- High performance hardware 400MHz I/O processor
- Supports Raid level 0, 1, 10, 3, 5, 6, Single Disk or JBOD

Storage

- Supports up to 8, 12 and 16 SATA II 3Gb/s HDDs
- Rugged 2U 8 bay, 12 bay and 3U 16 bay Rackmount Chassis
- Provides hot-swappable tray
- Individual Key lock of each HDD tray for physical security

Monitors/Indicators

- Web base GUI Raid Manager for remote management
- LCD Display Panel for setup and status
- SMTP manager, SNMP agent and Telnet function via Ethernet port
- API library for customer to write monitor utility
- FAN fail LED
- Over Temperature LED
- HDD fail LEDs

Fan Cooler

- Internal Two - 80x80x25 mm Fans
- External Two - 75x75x28 mm Blowers
- Hot-Swappable

Power Supply

- Serve-grade 400W Redundant Power Supply
- Universal: 100~240VAC, 50/60Hz

Environmental Requirements

- Operation Temperature: 5°C ~ 50°C
- Storage Temperature: -20°C ~ 70°C
- Operation Humidity: 10% ~80%, non-condensing
- Storage Humidity: 5% ~ 95%

Dimension

- NR345A(2U 8bay) / NR325A(2U 12 bay) : 559(D) x 482(W) x 88.5(H) mm
- NR335A(3U 16 bay) : 559(D) x 482(W) x 131(H) mm

Operating System

- Host Independent with available eSATA or USB 2.0 port

Model Available

- NR345A – 2U 8 bay
- NR325A – 2U 12 bay
- NR335A – 3U 16 bay

